

PLAN OF SURVEY OF
LOTS 251, 252 AND
253(ROAD)
NORTH THOMPSON IR#1

KDYD
BRITISH COLUMBIA

BCGS 92P .030
SCALE 1:1000 All distances are in metres

THE INTENDED PLOT SIZE OF THIS PLAN IS 864mm IN WIDTH BY 560mm IN HEIGHT (D SIZE) WHEN PLOTTED AT A SCALE OF 1:1000.

THIS SURVEY WAS EXECUTED DURING THE PERIOD OF SEPT 1st 2016 TO FEBRUARY 2nd 2017 BY SCOTT RHODES, CLS, BCLS.

GRID BEARINGS ARE DERIVED FROM A GNSS DUAL FREQUENCY STATIC BASELINE OBSERVATION BETWEEN REBAR 110 AND REBAR 101 AND ARE REFERRED TO THE CENTRAL MERIDIAN OF UTM ZONE 10.

THE UTM COORDINATES AND ESTIMATED HORIZONTAL POSITIONAL ACCURACY ACHIEVED ARE DERIVED FROM 5 HOURS OF DUAL FREQUENCY GNSS OBSERVATIONS POST PROCESSED USING NATURAL RESOURCE CANADA'S PRECISE POINT POSITIONING (PPP) SERVICE.

THIS PLAN SHOWS HORIZONTAL GROUND-LEVEL DISTANCES UNLESS OTHERWISE SPECIFIED. TO COMPUTE GRID DISTANCES, MULTIPLY GROUND-LEVEL DISTANCES BY THE AVERAGE COMBINED FACTOR OF 1.00002756. THE AVERAGE COMBINED FACTOR HAS BEEN DETERMINED BASED ON A MEAN ELLIPSOIDAL ELEVATION OF 367.3m.

- LEGEND**
-STANDARD CAPPED POST FOUND
 -STANDARD IRON POST FOUND
 -STANDARD IRON POST PLACED
 - ▲.....GNSS CONTROL POINT FOUND (GCP)
 - CH AZ.....CHORD AZIMUTH
 - CH.....CHORD LENGTH
 - LANDS DEALT WITH BOUNDED THUS

ALL POSTS MARKED WITH A WOODEN STAKE 0.3 HIGH AND 0.15 X 0.10 X 0.10

REAL TIME KINEMATIC GPS OBSERVATIONS WERE USED TO DERIVE PARTS OF THIS SURVEY.

THIS PLAN LIES WITHIN THE THOMPSON-NICOLA REGIONAL DISTRICT.

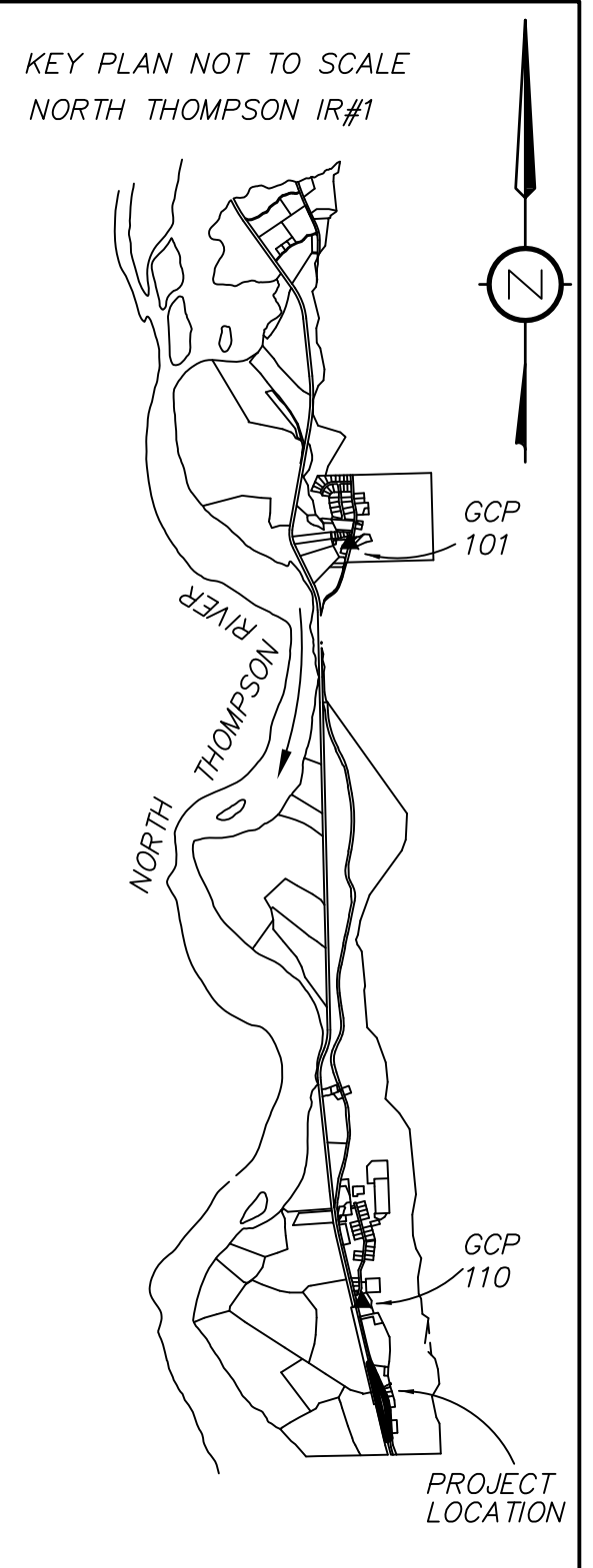
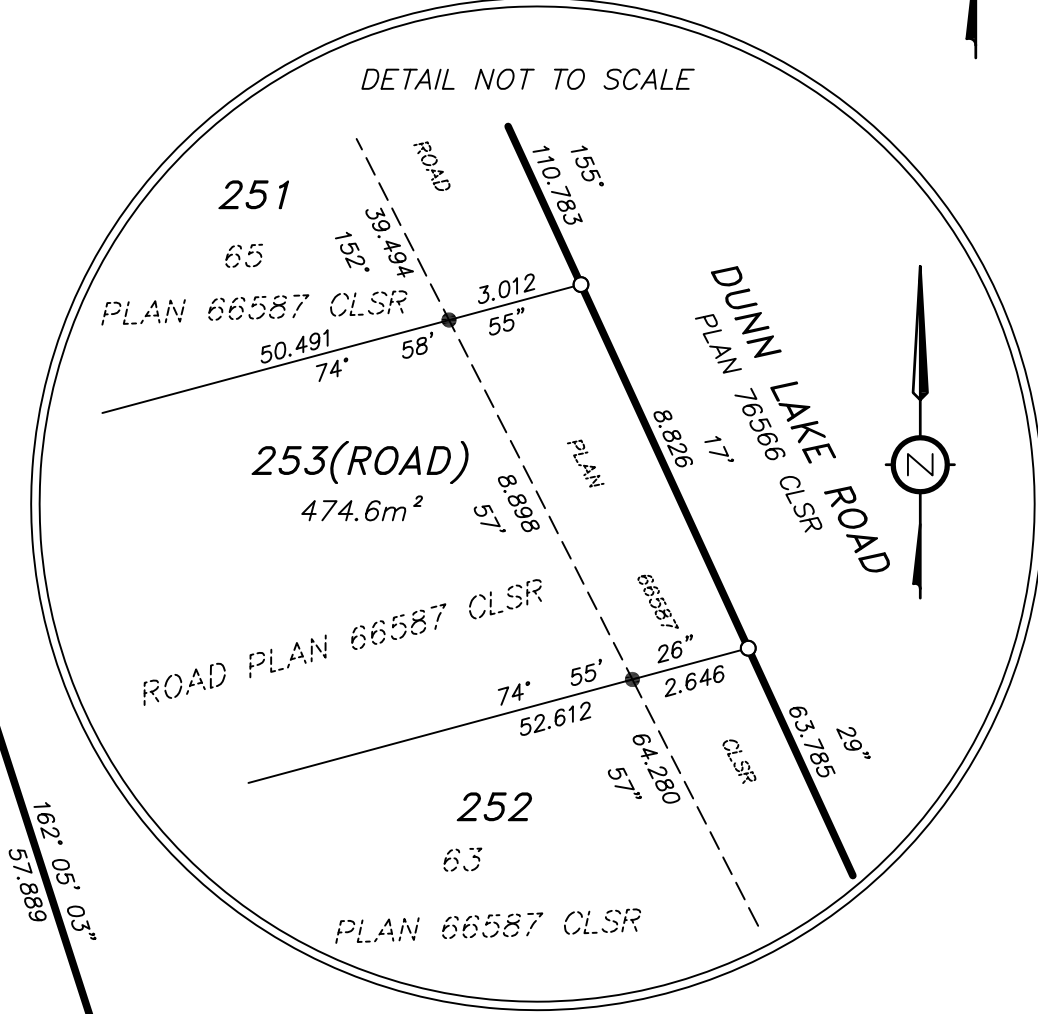


TABLE OF CONTROL MONUMENTS
DATUM: NAD83(CRS) 2002.0
UTM ZONE 10

| POINT | NORTHING | EASTING | COMBINED SCALE FACTOR | ESTIMATED POSITIONAL ACCURACY | ELLIPSOID ELEVATION |
|-------|-------------|------------|-----------------------|-------------------------------|---------------------|
| 110 | 5682044.506 | 698790.907 | 1.00002756 | 0.02 | 367.5 |
| 101 | 5687251.660 | 698515.563 | 1.00002521 | 0.02 | 373.8 |

Allnorth
Land Surveyors
#301-7 ST. PAUL STREET WEST,
KAMLOOPS, BC, V2C 1E9
TEL: 250-374-5331 FAX: 250-374-5332
DRAWN BY: SR
DRAWING NO: 15LS0646 - LOT 64- PR
FILE NO: 15LS0646
FB: P.

RE: SECTION 38, CANADA LANDS REGULATIONS
CERTIFIED CORRECT
ON THE 24th DAY OF FEBRUARY, 2017

SCOTT RHODES C.L.S.

DEPARTMENT OF NATURAL RESOURCES
RE: SECTION 31, CANADA LANDS ACT

APPROVED

ANDREW C. BREBNER C.L.S. DATE
MANAGER, CADASTRAL SERVICES WEST & NORTH
SURVEYOR GENERAL BRANCH

CHECKLIST No. XXXX
PROJECT NUMBER: 201610250

